

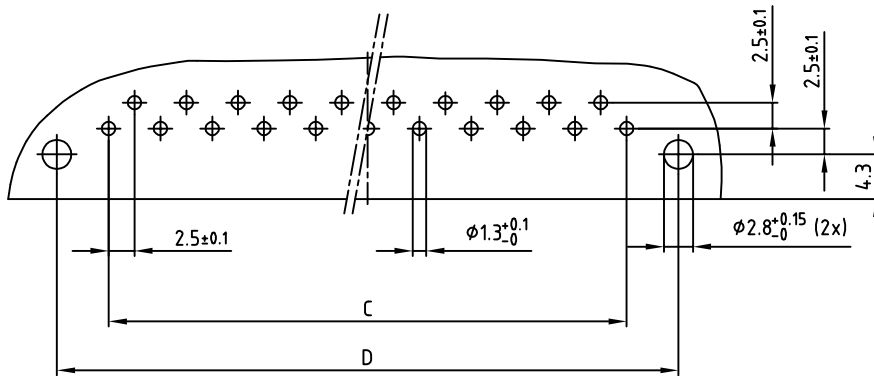
Polzahl No. of pos.	A ±0.2	B ±0.1	C ±0.1	D ±0.1	Art.-Nr. Part-No
13	45.6	12x2.5=30	12x2.5=30	40	101A10079X
21	65.6	20x2.5=50	20x2.5=50	60	101A10099X
31	90.6	30x2.5=75	30x2.5=75	85	101A10119X

NOTES:

1. INSULATOR: PC GF UL 94 V-1, GREY
2. CONTACTS: COPPER ALLOY
PLATING: GOLD OVER NICKEL
50 MATING CYCLES

3. CONNECTOR IS PART MARKED: PART-NO CONEC ABC

P.C.B. HOLE DRILLINGS



Directive 2002/95/EC RoHS compliant

APPROVAL # FREIGABE # DEBLOCAGE # AUTORIZACION # APPROVAL

CUSTOMER APPROVAL DATE:

NAME: TITLE:

COMPANY NAME:

APPROVAL # FREIGABE # DEBLOCAGE # AUTORIZACION # APPROVAL

THIS DRAWING MAY NOT BE COPIED OR REPRODUCED IN ANY WAY, AND MAY NOT BE PASSED ON TO A THIRD PARTY, WITHOUT WRITTEN PERMISSION. OWNERSHIP AND COPYRIGHT OF CONEC GmbH DO NOT ALTER CAD DRAWING BY HAND

rev.	description	date	name
1 x c	Ä6688	15.03.2013	E.Mick.
3 x b	Ä3087	21.08.2008	Sonne
a	Origin		

tolerance		dim. in mm	
2006	date	name	
drawn	15.11	Schwenkler	
appd.	16.11	Lehmenkühler	
norm	DIN 41617		

scale: 2:1

material: SEE NOTES

title: MALE CONNECTOR
13pos.-31pos. / 2.5mm with angled solder pins

dwg no: AutoCAD 2006 DIN-A 3

part no: 10K1A014 sh:1/1

part no: SEE TABLE (b)

