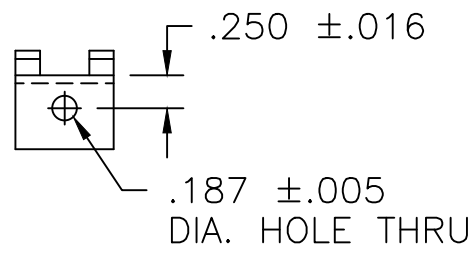
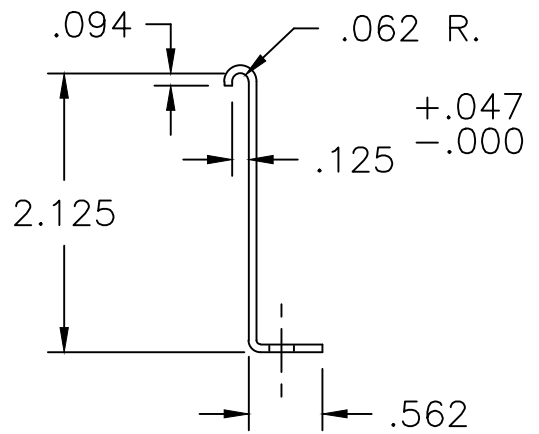
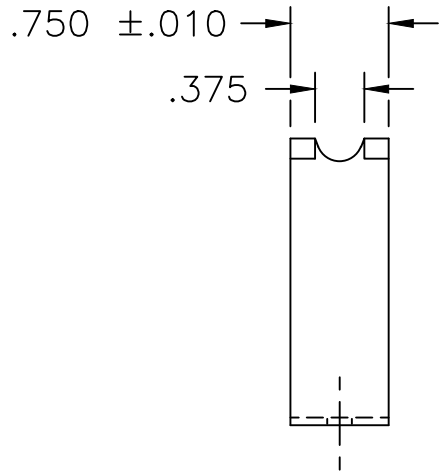



DWG. SIZE B	DWG. NO. 657-2336		
REVISIONS			
SYM.	E.C.N.	DATE	APVD.
A	24165	2/1/00	DEL. VENDOR



<small>UNLESS OTHERWISE SPECIFIED, TOLERANCE IS ±</small> <small>DECIMALS HOLES ANGLES DRAFT</small> <small>.XX .010 .002 1° 1-1/2°</small> <small>.XXX .005 .031</small>	<small>UNITS</small> <small>IN [mm]</small>	<small>TITLE:</small> <p style="text-align: center; font-size: 1.2em;">BRACKET-MOUNTING</p>				 <small>A COMPONENTS CORPORATION OF AMERICA COMPANY</small> DAYTON, OHIO U.S.A.			
		<small>MATERIAL:</small> 445-0100 #16 GAUGE (.0598) CRS	<small>ALL DIMENSIONS APPLY AFTER PLATING</small>	<small>DRAWN BY</small> S.A. SMITH			<small>DATE</small> 1/23/97	<small>FIRST USED ON</small> 	<small>DO NOT SCALE DWG.</small>
<small>The information and design disclosed herein was originated by and is the property of STACO ENERGY PRODUCTS CO., which reserves all patent, proprietary, design, manufacturing, reproduction, use and sale rights thereto, and to any article disclosed therein except to the extent rights are expressly granted to others. The foregoing does not apply to vendor proprietary parts.</small>		<small>CHECKER</small>	<small>DATE</small>	<small>WEIGHT APPROX.</small>	<small>CODE IDENT. NO.</small> 83008	<small>DWG. SIZE</small> B	<small>DWG. NO.</small> 657-2336		
		<small>ENGINEER</small>	<small>DATE</small>	<small>SCALE</small> 1 = 1	<small>SHEET 1 OF 1</small>				