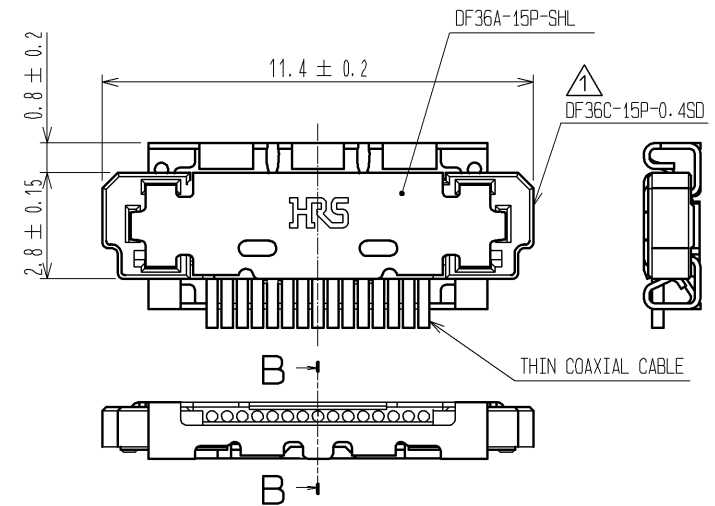


MATING FIGURE

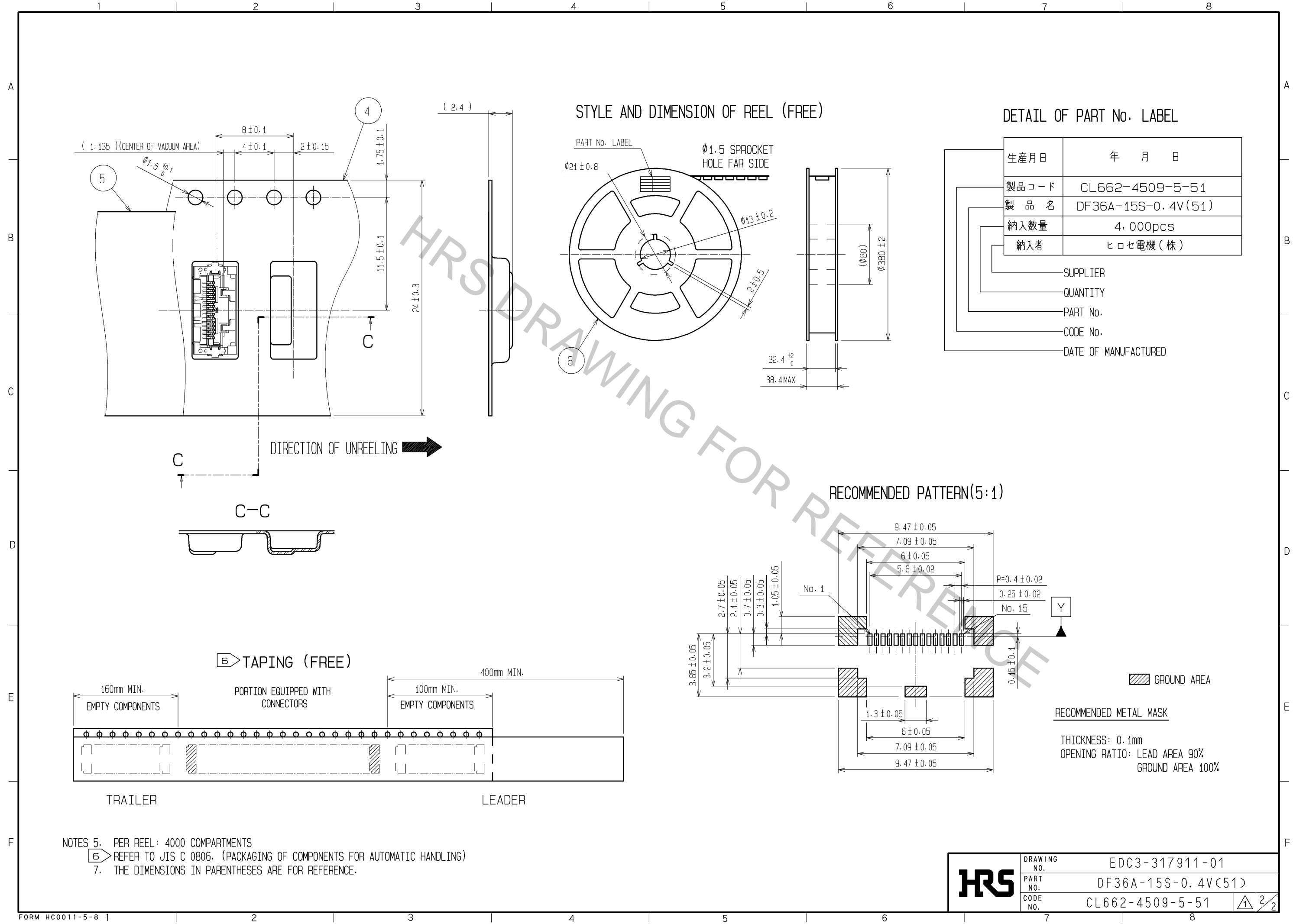


NOTES

1. LEAD CO-PLANARITY SHALL BE 0.1mm MAX.
2. STIFFENER IS REQUIRED FOR MOUNTING ONTO FPC IN ORDER TO AVOID STRESS BY FPC SLACKING TO MOUNTED CONNECTOR.
3. UNMATING SHALL BE DONE WITH THE SPECIFIC EXTRACTION TOOL.
4. SOLDERING REWORK IS NOT POSSIBLE SINCE SOLDERING LEADS ARE COVERED BY METAL SHIELDING.

2	LCP	UL94V-0	6	PS	BLACK
1	PHOSPHOR BRONZE	CONTACT AREA : Au PLATING 0.3µm min LEAD AREA : Au PLATING 0.1µm min UNDER PLATING : Ni PLATING 2µm min	5	POLYESTER	CLEAR
			4	PS	CLEAR
			3	PHOSPHOR BRONZE	WHOLE AREA : Sn PLATING 1µm min UNDER PLATING : Cu PLATING 0.2µm min
NO.	MATERIAL	FINISH . REMARKS	NO.	MATERIAL	FINISH . REMARKS
UNITS mm		SCALE 5 : 1	COUNT 3	DESCRIPTION OF REVISIONS DIS-H-003523	
DESIGNED SI. ISHII		CHECKED HK. UMEHARA		DATE 08.11.29	
APPROVED : TS. SAKATA 08.05.12		DRAWING NO. EDC3-317911-01			
CHECED : HK. UMEHARA 08.05.10		PART NO. DF36A-15S-0.4V(51)			
DESIGNED : HY. SHIOZAWA 08.05.09		CODE NO. CL662-4509-5-51			
DRAWN : SI. ISHII 08.05.09					

Apr.1.2017 Copyright 2017 HIROSE ELECTRIC CO., LTD. All Rights Reserved.



NOTES 5. PER REEL: 4000 COMPARTMENTS  
 (6) REFER TO JIS C 0806. (PACKAGING OF COMPONENTS FOR AUTOMATIC HANDLING)  
 7. THE DIMENSIONS IN PARENTHESES ARE FOR REFERENCE.

<b>HRS</b>	DRAWING NO.	EDC3-317911-01
	PART NO.	DF36A-15S-0.4V(51)
	CODE NO.	CL662-4509-5-51
		2/2