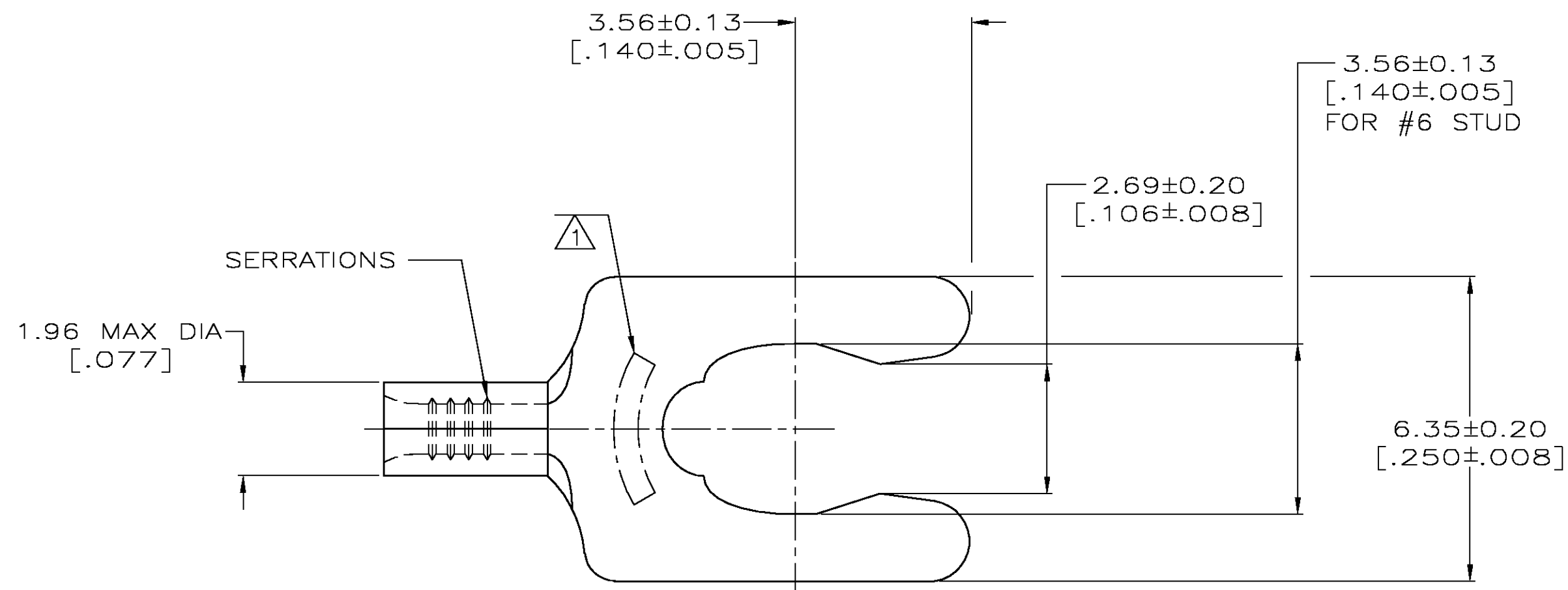


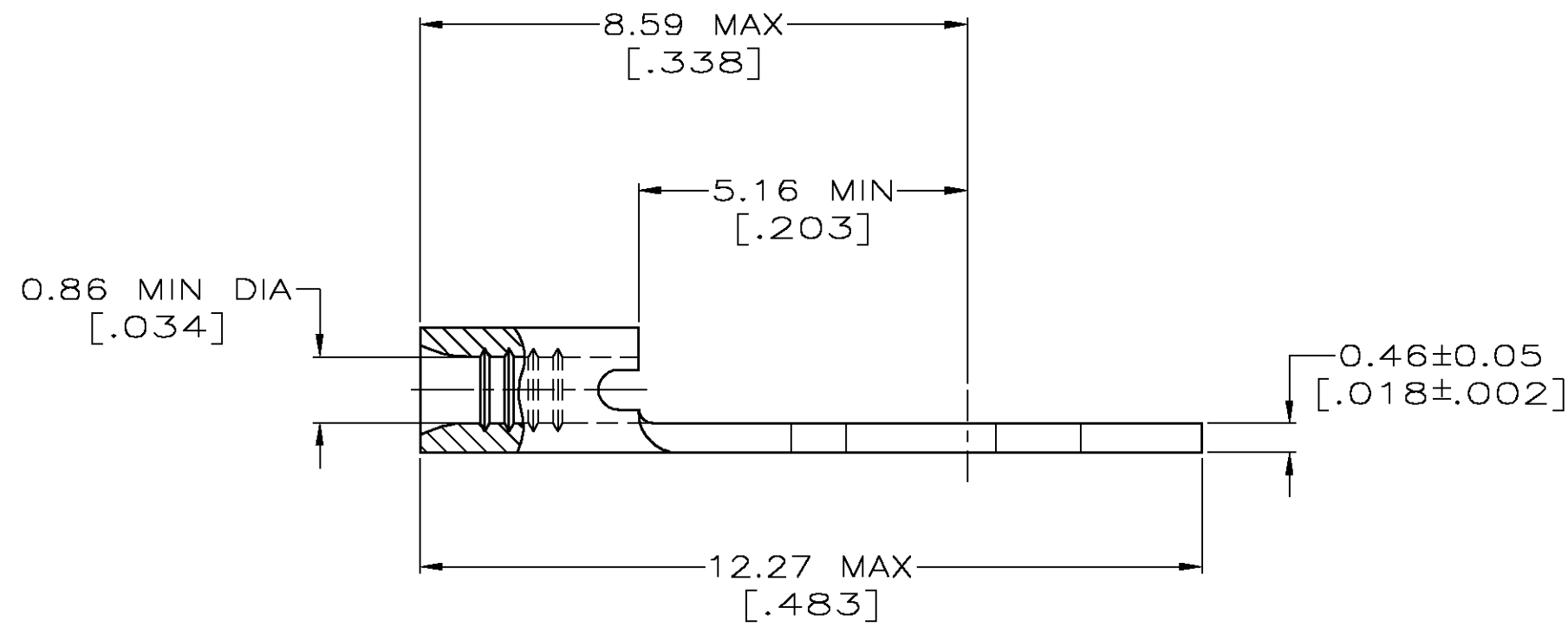
LOC	DIST	P	F	ZONE	LTR	DESCRIPTION	DATE	APPD
G	14					0 DRAWN PER 0G3A-0027-03	23JAN03	JF DAP

METRIC
 DIMENSIONS LISTED IN mm [INCHES]



AMP WIRE RANGE	E13288 Listed
26-22 AWG STRANDED	NOT LISTED
LR7189 Certified	MILITARY P/N AND CLASS
NOT CERTIFIED	NOT APPLICABLE

- ① STAMP 6S AMP APPROX AS SHOWN
6S INDICATES STUD SIZE
- ② PRELIMINARY - NOT FOR PRODUCTION



YES	② 53003-4
-	53003-1
HEAT TREAT	PART NO

AMP INCORPORATED
CUSTOMER SERVICE SYSTEMS

MAX RECOMMENDED OPERATING TEMPERATURE:
 170° C MAX

DO NOT SCALE PRINT. UNLESS SPECIFIED
 DIMENSIONS IN mm [INCHES] -
 TOLERANCES ON :
 2 PLC DEC ± -
 3 PLC DEC ± -
 ANGLES ± -

DR 23JAN03
 JR RUTH
 CHK 2-10-93
 DA PATTERSON
 APPD 2-10-93
 DE MILLER
 APPD 2-10-93
 JL MECKLEY
 PRODUCT SPEC -

AMP AMP Incorporated
 Harrisburg, PA 17105-3608

FOR ADDITIONAL PRODUCT INFORMATION OR COPIES OF DRAWINGS AND TECHNICAL DOCUMENTS

PRODUCT INFORMATION CENTER
 1-800-522-6752

VOLTAGE RATING:
 NOT APPLICABLE

MATERIAL
 PHOSPHOR BRONZE PER ASTM B-103 ANNEALED

APPLICATION SPEC -

NAME
TERMINAL, SHORT SPRING SPADE, BUDGET

FOR APPLICATION TOOLING INFORMATION

TOOLING ASSISTANCE CENTER
 1-800-722-1111

WIRE CROSS SECTIONAL AREA RANGE:
 0.1-0.41mm² [.202-810] CIR MILS STRANDED

FINISH
 TIN PLATE 0.00254 [.000100] MIN THK PER ASTM B545

WEIGHT -

SIZE 00779 DRAWING NO = 53003
 SCALE 10:1 SHEET 10F 1

FOR ORDER ENTRY
 1-800-526-5142

THIS DRAWING IS A CONTROLLED DOCUMENT FOR AMP INCORPORATED. IT IS SUBJECT TO CHANGE AND THE CONTROLLING ENGINEERING ORGANIZATION SHOULD BE CONTACTED FOR THE LATEST REVISION.