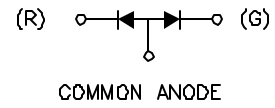
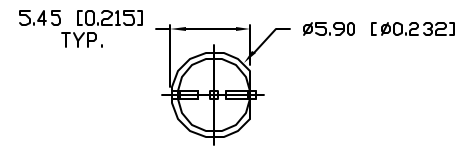
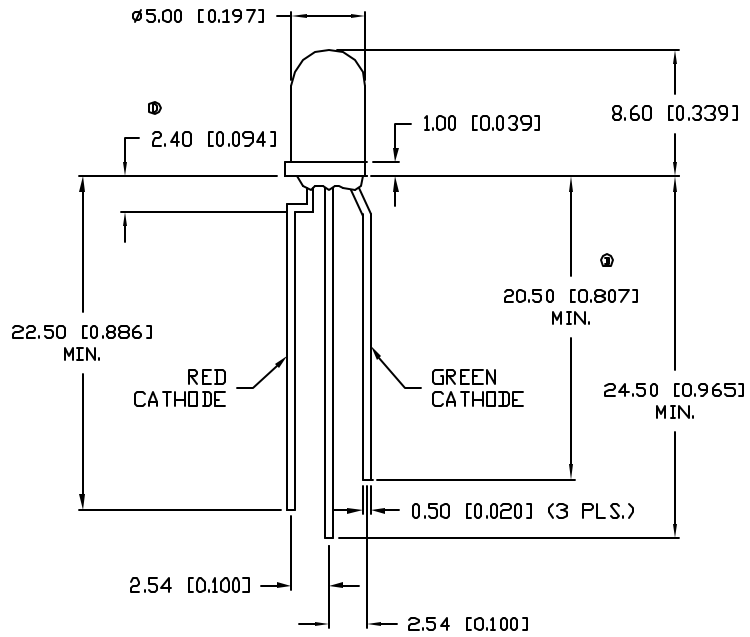


DATE	REVISIONS	REV
7-9-92	REDRAWN.	A
8-13-94	CHANGED SAFE OPER. SPECS.	B
4-5-95	CHANGED SPECS.	C
9-7-95	CORRECTED DIMS. WHERE NOTED.	D
3-8-96	E.C.N. #10112./	E
2-27-98	E.C.N. #10BRDR. & REDRAWN./	F

DRAWING NUMBER  
SSL-LX5099IGW-CA  
REV  
F



UNLESS OTHERWISE SPECIFIED TOLERANCE IS ±.25mm (±0.010")

ELECTRO-OPTICAL CHARACTERISTICS  $T_A=25^{\circ}C$   $I_f=20mA$

PARAMETER	MIN	TYP	MAX	UNITS	TEST COND
PEAK WAVELENGTH		635 (RED)		nm	
		565 (GREEN)		nm	
FORWARD VOLTAGE(R/G)		2.0/2.2	2.5/2.6	$V_f$	
REVERSE VOLTAGE	5.0			$V_r$	$I_f=100\mu A$
AXIAL INTENSITY		6		mcd	$I_f=20mA$
VIEWING ANGLE		60		2x theta	
EMITTED COLOR:	RED/GREEN				
EPOXY LENS FINISH:	MILKY WHITE DIFFUSED				

⊙ LIMITS OF SAFE OPERATION AT 25°C PER CHIP

PARAMETER	COLORS	MAX	UNITS
PEAK FORWARD CURRENT*		150	mA
STEADY CURRENT	(R/G)	30/25	mA
POWER DISSIPATION		105	mW
DERATE FROM 25°C		-1.2	mW/°C
⊙ OPERATING, STORAGE TEMP.		-40 TO +85	°C
⊙ SOLDERING TEMP.		+260	°C
⊙ 2.0mm FROM BODY			3 SEC. MAX

\*  $t < 10\mu s$

RELIABILITY NOTE

OUR MANY YEARS OF EXPERIENCE DATA ACCUMULATION INDICATE THAT SOLDER HEAT IS A MAJOR CAUSE OF EARLY AND FUTURE FAILURE. PLEASE PAY ATTENTION TO YOUR SOLDERING PROCESS.



290 E. HELLEN ROAD  
PALATINE, ILLINOIS 60067  
(847) 359-2790

CONFIDENTIAL INFORMATION  
THE INFORMATION CONTAINED IN THIS DOCUMENT IS THE PROPERTY OF LUMEX INCORPORATED. EXCEPT AS SPECIFICALLY AUTHORIZED IN WRITING BY LUMEX INCORPORATED, THE HOLDER OF THIS DOCUMENT SHALL KEEP ALL INFORMATION CONTAINED HEREIN CONFIDENTIAL AND SHALL PROTECT SAME IN WHOLE OR IN PART FROM DISCLOSURE AND DISSEMINATION TO ALL THIRD PARTIES.

DATE: 4-23-90	DWN:	CHK'D:	APPD:
SCALE: N/A			

T-5mm (T-1 3/4) LED BICOLOR RED/GREEN,  
COMMON ANODE.

PAGE 1 OF 1	DRAWING NUMBER SSL-LX5099IGW-CA	REV F
-------------	------------------------------------	----------