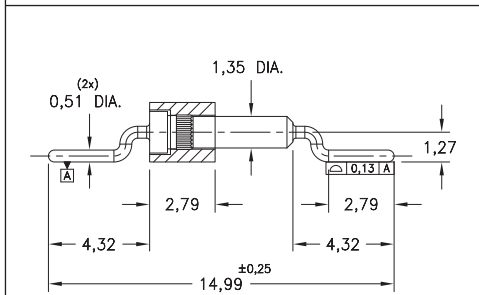
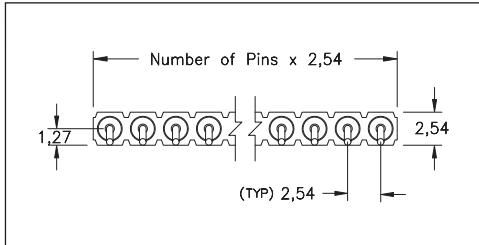


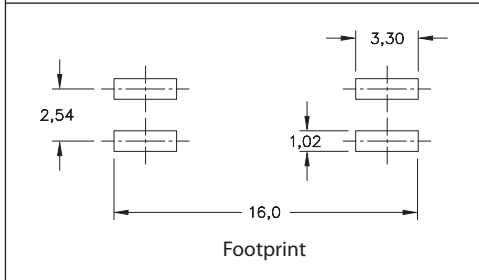
INTERCONNECTS

SERIES 339 • 2,54 GRID HORIZONTAL SURFACE MOUNT JUMPER • SINGLE ROW STRIPS



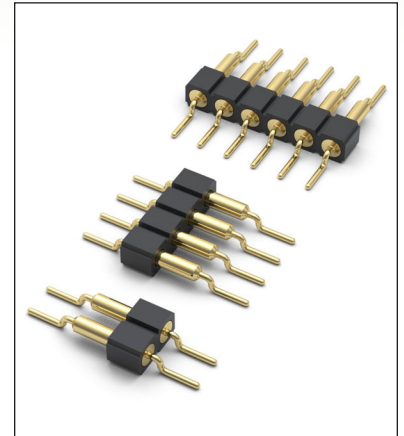
Coplanarity 0,13. For pin counts >10 positions, consult Technical Support.

FIG. 1









Footprint

- Series 339 single row Horizontal surface mount jumpers on 2,54 grid centers
- Series 339 use MM #3900 pins. See page 214 for details
- Insulators are high temperature thermoplastic, suitable for all soldering operations
- Ideal for daisy chaining parallel boards



ORDERING INFORMATION

FIG. 1	Series 339...000	Single Row Surface Mount Jumper
		339-XX-1
	Specify number of pins	02-10
  		
SPECIFY PLATING CODE XX=	10 	40 
Pin Plating 	0,25µm Au	5,08µm Sn

