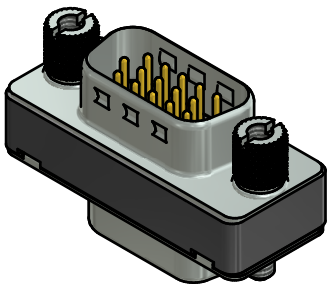


**(b) NOTES:**

1. METALSHIELDS: STEEL; min. 315µm TIN over 40-80µm NICKEL
2. INSULATORS: PBT GF UL 94 V-0; BLACK
3. CONTACTS: COPPER ALLOY; PLATING (SEE PART NO):
  - PLEASE ADD A for GOLD FLASH over NICKEL (PREFERRED TYPE)
  - PLEASE ADD B for 20µm HARD GOLD over min. 50µm NICKEL
  - PLEASE ADD C for 30µm HARD GOLD over min. 50µm NICKEL
4. THREADED INSERTS: COPPER ALLOY; min 200µm TIN over 80µm NICKEL
5. JACK SCREWS: COPPER ALLOY; NICKEL PLATED
6. CAPACITANCE: 830pF ±20%
7. DIELECTRIC WITHSTANDING VOLTAGE: 300 VDC
8. MAXIMUM TORQUE VALUE FOR THREAD : 6 in.LB
9. CONNECTOR IS PART MARKED: 243□11800X CONEC ABC (see note 4)



Directive 2002/95/EC RoHS compliant

THIS DRAWING MAY NOT BE COPIED OR REPRODUCED IN ANY WAY, AND MAY NOT BE PASSED ON TO A THIRD PARTY WITHOUT WRITTEN PERMISSION. OWNERSHIP AND COPYRIGHT OF CONEC GmbH				tolerance			scale: 2:1 (5:1)	
				dim. in mm			material: see notes	
DO NOT ALTER CAD DRAWING BY HAND				date	name	title: D-SUB HD C-FILTER ADAPTER 15pos. SOCKET / PLUG		
				drawn 17.07.2014	Bludau			
5 x b A5283 17.07.2014 Blu				appd. 17.07.2014	Henneboel	dwg no: <b>(b) 24K1A1540</b>		
				norm				
rev. description date name						part no: <b>(b) 243□11800X</b> (see note 3)		DIN-A3 sh: 1